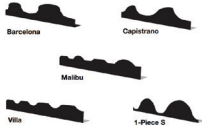


TRI-BUILT® BIRD STOP



MINCRON #	PRODUCT DESCRIPTION	VENDOR ITEM #	TYPE
	Barcelona 10'	3490-B-28	Charcoal (-B)
649679	Capistrano 10'	3500-C-28	Terra Cotta (-R)
	Malibu 10'	3500-M-28	Brown (-BR)
	Villa 10'	3600-V-28	White (-W)
	1-Piece S Style 10'	3650-S-28	

TRI-BUILT® COPING



ITEM CODE	PRODUCT DESCRIPTION	VENDOR ITEM #	TYPE
649682	10" (2" x 6" x 2") with Drips	1770-10-26	Galvanized
568035	12" (2" x 8" x 2") with Drips	1770-12-26	Zincalume (-Z)
			Brown (-B)
			White (-W)
			Charcoal (-C)

TRI-BUILT® COUNTER FLASHING



MINCRON #	PRODUCT DESCRIPTION	VENDOR ITEM #	TYPE
568027	3" x 1/2"	1400-26-Z	Galvanized
	4" x 1/2" x 1/4"	1410-26-1	Zincalume (-Z)
568028	5" x 1/2"	1420-26-Z	
	6" x 1/2" x 1/4"	1430-26-1	
	6" x 1/2" x 1/2"	1430-2	

TRI-BUILT CHIMNEY / SADDLE STOCK



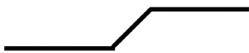
MINCRON #	PRODUCT DESCRIPTION	VENDOR ITEM #	TYPE
649719	18" (4" x 14") 28ga	1810-4, 14-28	Galvanized
568309	18" (4" x 14") 26ga	1810-4, 14-26	Zincalume (-Z)
	18" (4" x 14") 28ga	1810-4, 14-28-Z	
649681	18" (4" x 14") 26ga	1810-4, 14-26-Z	

TRI-BUILT® TUCKER FLASHING



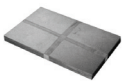
MINCRON #	PRODUCT DESCRIPTION	VENDOR ITEM #	TYPE
577589	5" (3-1/2"x1/2"x1/2"x1/2")	1780-5-26	Galvanized
			Zincalume (-Z)

TRI-BUILT® Z BAR



MINCRON #	PRODUCT DESCRIPTION	VENDOR ITEM #	TYPE
	4" (2" x 1-1/2" x 3-1/2") 28ga	1570-4-28-110	Galvanized
	4" (2" x 1-1/2" x 3-1/2") 26ga	1570-4-26-110	Zincalume (-Z)
	6" (2" x 1" x 3") 28ga	1660-28	
568297	6" (2" x 1" x 3") 26ga	1660-26	

TRI-BUILT® FLAT SHINGLES



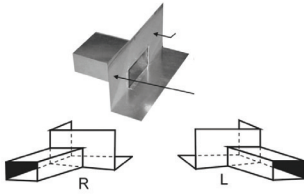
MINCRON #	PRODUCT DESCRIPTION	VENDOR ITEM #	TYPE
	5" x 7" 50/bdl	2420	Galvanized Lite
568247	6" x 8" 50/bdl	2435	Galvanized 26ga (-26)
568250	8" x 12" 50/bdl	2430	Brown (-B)
	10" x 14" 50/bdl	2440	White (-W)
			Charcoal (-C)

TRI-BUILT® STEP SHINGLES



MINCRON #	PRODUCT DESCRIPTION	VENDOR ITEM #	TYPE
	3" x 5" x 7" 50/bdl	1815-3,5,7	Galvanized Lite
582004	3" x 5" x 8" 50/bdl	1815-3,5,8-26	Galvanized 26ga (-26)
	5" x 5" x 8" 50/bdl	1815-5,5,8	Brown (-B)
649728	4" x 6" x 14" 50/bdl	1815-4,6,14	White (-W)
			Charcoal (-C)

TRI-BUILT® SCUPPER / ROOF OUTLET



MINCRON #	PRODUCT DESCRIPTION	VENDOR ITEM #	TYPE
	2" x 3"	3401	CENTER
	3" x 3"	3360-12	RIGHT (-R)
649720	3" x 4"	3411	LEFT (-L)
	4" x 4"	3360-16	
649721	4" x 6"	3421	Galvanized
	5" x 5"	3360-20	TPO/Clad
	6" x 6"	3360-24	
			Hot Soldered
			Caulked

TRI-BUILT® UNIVERSAL PIPE CAPS



MINCRON #	PRODUCT DESCRIPTION	VENDOR ITEM #	TYPE
568021	3"	3CW	For Conductor Pipe
568023	4"	4CW	or Double Wall Pipe
	5"	5CW	
568025	6"	6CW	
	7"	7CW	
	8"	8CW	

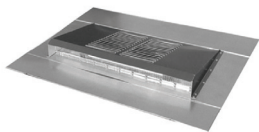
TRI-BUILT® CODE CAP ASSEMBLY



MINCRON #	PRODUCT DESCRIPTION	VENDOR ITEM #	TYPE
	3" SHINGLE	3RAR	Available with bases for steep pitch
	3" SHAKE	3RASHK	
563456 649706	4" SHINGLE	4RAR	
649707 649706	4" SHAKE	4RASHK	
	5" SHINGLE	5RAR	
	5" SHAKE	5RASHK	
649708 649709	6" SHINGLE	6RAR	
649710 649709	6" SHAKE	6RASHK	
	7" SHINGLE	7RAR	
	7" SHAKE	7RASHK	
649711 649712	8" SHINGLE	8RAR	
649713 649712	8" SHAKE	8RASHK	
	4" OVAL HORIZONTAL/VERTICAL	4OHSHK/4OVSHK	

TRI-BUILT® GLIDER VENT

US Patent 9, 447, 583



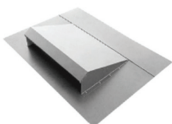
MINCRON #	PRODUCT DESCRIPTION	VENDOR ITEM #	TYPE
	Shingle	6026	Galvanized
	Shake	6028	Zincalume (-GVM)
	Wide Shingle	6027	Brown (-B)
	Wide Shake	6029	White (-W)
561456	Painted Front Flange Shingle	6026-PFF	Charcoal (-C)
	Painted Front Flange Shake	6028-PFF	Terra Cotta (-T)
	Wide PFF Shingle	6027-PFF	Gray (-G)
	Wide PFF Shake	6029-PFF	Ember Resistant (-ER)

TRI-BUILT® HALF ROUND DORMER



MINCRON #	PRODUCT DESCRIPTION	VENDOR ITEM #	TYPE
568256	Zincalume 18"	5800	
568254	Zincalume 24"	5870	
568255	Aluminum Flange 18"	5840	
568253	Aluminum Flange 24"	5910	
	Sub-Base Galvanized 18"	5860	
	Sub-Base Galvanized 24"	5930	

TRI-BUILT® EYEBROW VENT



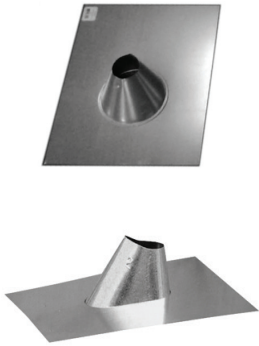
MINCRON #	PRODUCT DESCRIPTION	VENDOR ITEM #	TYPE
	18" x 4" Shingle Base	6032	Galvanized
	18" x 4" Shake Base	6034	Zincalume
			Brown (-B)
			White (-W)
			Charcoal (-C)

TRI-BUILT® ROLL VALLEY



MINCRON #	PRODUCT DESCRIPTION	VENDOR ITEM #	TYPE
	6"	2320-E	Lt Galvanized
	8"	2330-E	26ga Galv (-26)
	10"	2333-E	Aluminum
	12"	2336-E	Charcoal (-C)
	14"	2340-E	Brown (-B)
577583	20"	2350-E	White (-W)

TRI-BUILT® PIPE FLASHING



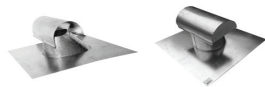
MINCRON #	PRODUCT DESCRIPTION	VENDOR ITEM #	TYPE
	1/2" FHA	1/2FFU	Galvanized
568139	3" FHA	3/4FFU	Standard
	1" FHA	1FFU	FHA
568145	1-1/2" FHA	11/2FFU	Regular
568093	2" FHA	2FFU	Shingle
568095	3" FHA	3FFU	Shake
568098	4" FHA	4FFU	
568101	4" Oval Std.	4OF	Aluminum
568111	5" FHA	5FFU	
568115	6" FHA	6FFU	Sizes 3" and larger
568126	7" FHA	7FFU	Conductor (CF/CFFU)
568128	8" FHA	8FFU	Soil (SF/SFFU)
	1" Regular	1PFR	Double Wall (EF/EFFU)
	2" Regular	2PFR	Transite (TF/TFFU)
	3" Regular	3PFR	
	4" Regular	4PFR	
	1" Shake	1PFSHK	
	2" Shake	2PFSHK	
	3" Shake	3PFSHK	
	4" Shake	4PFSHK	

TRI-BUILT® PRE-JACK FLASHING



MINCRON #	PRODUCT DESCRIPTION	VENDOR ITEM #	TYPE
	5"	5PJ	
	6"	6PJ	
	8"	8PJ	
	12"	12PJ	

TRI-BUILT® ROOF JACK T-TOP



MINCRON #	PRODUCT DESCRIPTION	VENDOR ITEM #	TYPE
568229	4"	6221	Galvanized
	4" with Ends	6221E	Standard
	4" with Ends & Mesh	6221E-M	FHA
568235	7"	6301	Shingle
	7" with Ends	6301E	Shake
	7" with Ends & Mesh	6301E-M	
	4" x 11" Flat Type	6460	Aluminum
	6" x 6"	6400	

TRI-BUILT® RUBBER COLLAR



MINCRON #	PRODUCT DESCRIPTION	VENDOR ITEM #	TYPE
	1-1/2"	RC1.5	Meets ASTM
	2"	RC2.0	D-2000 Standards

TRI-BUILT® TILE PAN



MINCRON #	PRODUCT DESCRIPTION	VENDOR ITEM #	TYPE
	8" (1/2" x 4" x 3-1/2") 10'	1560-8-26	Galvanized
	10" (1/2" x 6" x 3-1/2") 10'	1560-10-26	Zincalume
	11" (1" x 6" x 4") 10'	1560-11-26-4	
	12" (1" x 7" x 4") 10'	1560-12-26-4	

TRI-BUILT® TWO WAY EDGING (DRIP EDGE)



MINCRON #	PRODUCT DESCRIPTION	VENDOR ITEM #	TYPE
568168	1-1/2" x 1-1/2" 10'	1070X3-28	Galvanized
568187	2" x 2" 10'	1130X3-28	Zincalume (-Z)
	2" x 3" 10'	1160X4-28	Brown (-B)
568198	2" x 4" 10'	1190X4-28	White (-W)
568204	3" x 3" 10'	1220X3-28	Charcoal (-C)
	3" x 4" 10'	1250X4-28	Terra Cotta (-T)
	4" x 4" 10'	1290X3-28	
	4" x 6" 10'	1330X4-28	

TRI-BUILT® TWO WAY EDGING (KICK-IN/GRIP EDGE)



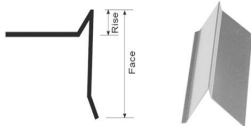
MINCRON #	PRODUCT DESCRIPTION	VENDOR ITEM #	TYPE
568054	1-1/2" x 1-1/2" 10'	1070X9-28	Galvanized
568068	2" x 2" 10'	1130X9-28	Zincalume (-Z)
	2" x 3" 10'	1160X9-28	Brown (-B)
	2" x 4" 10'	1190X9-28	White (-W)
649677	3" x 3" 10'	1220X9-28	Charcoal (-C)
	3" x 4" 10'	1250X9-28	Terra Cotta (-T)
	4" x 4" 10'	1290X9-28	
	4" x 6" 10'	1330X9-28	

TRI-BUILT® TWO WAY EDGING (L-METAL)



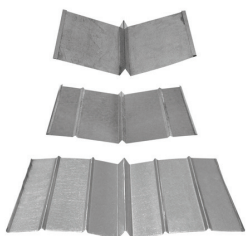
MINCRON #	PRODUCT DESCRIPTION	VENDOR ITEM #	TYPE
	1-1/2" x 1-1/2" 10'	1070X2-28	Galvanized
	2" x 2" 10'	1130X2-28	Zincalume (-Z)
	2" x 3" 10'	1160X2-28	Brown (-B)
	2" x 4" 10'	1190X2-28	White (-W)
	3" x 3" 10'	1220X2-28	Charcoal (-C)
	3" x 4" 10'	1250X2-28	Terra Cotta (-T)
568216	4" x 4" 10'	1290X2-28	
568217	4" x 6" 10'	1330X2-26	

TRI-BUILT® GRAVEL STOP (L-METAL)



MINCRON #	PRODUCT DESCRIPTION	VENDOR ITEM #	TYPE
	4" Low Rise 10'	2005-.25-D	Galvanized
	4" High Rise 10'	2005-D	Zincalume (-Z)
	5" Low Rise 10'	2130-.25-D	Brown (-B)
	5" High Rise 10'	2130-D	White (-W)
	6" Low Rise 10'	2050-.25	Charcoal (-C)
	6" High Rise 10'	2050-D	Terra Cotta (-T)
	7" Low Rise 10'	2090-.25-D	
	7" High Rise 10'	2090-D	
	8" Low Rise 10'	2100-.25-D	
	8" High Rise 10'	2100-D	

TRI-BUILT® W VALLEY



MINCRON #	PRODUCT DESCRIPTION	VENDOR ITEM #	TYPE
	18" Flat Hem	2150-FH	Galvanized
	18" 3-Rib Open Hem	2150-3R-OH	Zincalume (-Z)
	18" 5-Rib Open Hem	2150-5R-OH	Brown (-B)
	24" Flat Hem	2200-FH	White (-W)
568288	24" 3-Rib Open Hem	2200-3R-OH	Charcoal (-C)
	24" 5-Rib Open Hem	2200-5R-OH	Terra Cotta (-T)
	26" No Rib Open Hem	2234-OH	
649731	26" 3-Rib Open Hem	2234-3R-OH	
	26" 5-Rib Open Hem	2234-5R-OH	
	30" No Rib Open Hem	2235-OH	
	30" 3-Rib Open Hem	2235-3R-OH	
649732	30" 5-Rib Open Hem	2235-5R-OH	
	No Hem is also available		